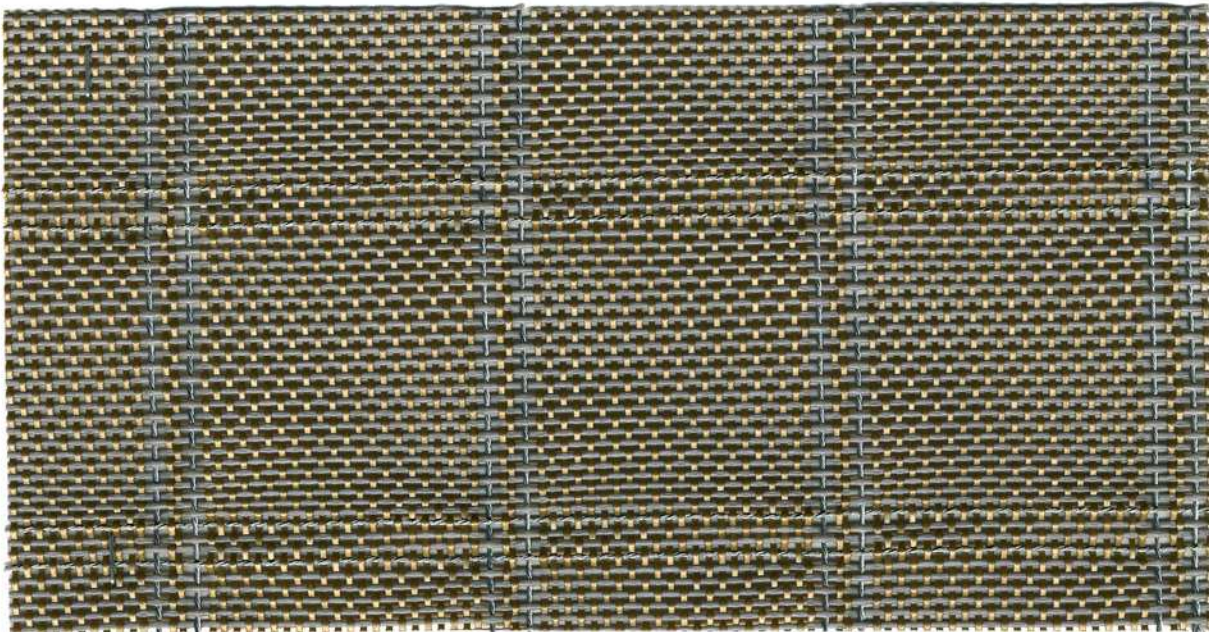


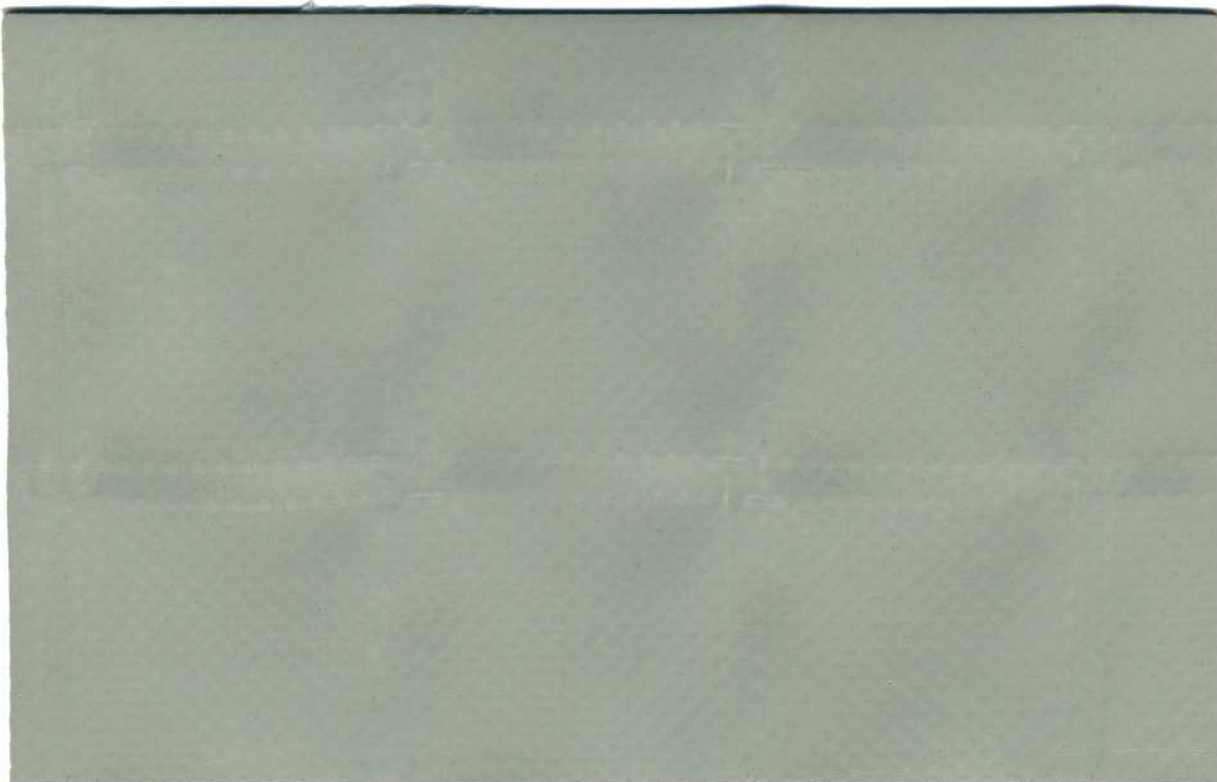
FERRARI



DEFENDER®
7763



DEFENDER® 7763 - COLOR 5508 TITANE



DEFENDER® 7763 (COLOR 5508) CALENDERED ON 905 F3 (COLOR 31071)

ROLL-WIDTH: 180 cm

WEIGHT: 620 g/m²

TRUCK TARPULINS

GUARANTEES AND QUALITY LABELS



FEATURES

➤ EFFICIENT PROTECTION:

- Fabric with built-in very high resistance multi-strand steel cables.
- These metal cables are arranged in pairs, warp-wise and weft-wise, each pair is only 4 cm away from its neighbor.
- Large protective surface (roll-width is 1.80 m).

➤ EXCEPTIONAL FLEXIBILITY MEANS THAT CURTAINS KEEP ALL THEIR HANDLING QUALITIES.

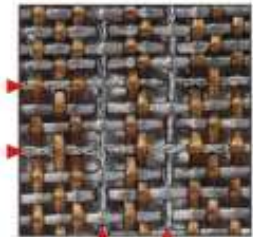
➤ DURABILITY: THE STEEL CABLES ARE ANTI-CORROSION TREATED.

➤ CONSIDERABLE ADAPTATION POSSIBILITIES TO NEW AND EXISTING TARPULINS.

➤ SALENDERING SERVICE ON DEMAND THAT FACILITATES MAKING-UP OPERATIONS. PERFECT COMPATIBILITY WITH WELDED ADVERTISING SIGNS AND LOGOS.

COLORS & REFERENCES

(COLORS ARE INDICATIVE)



Ref. 7763-5508 Titane

Made-to-measure calendering service: contact us

TECHNICAL SPECIFICATIONS

SPECIFICATIONS	DEFENDER® 7763	NORMS
COLOR CODE	5508 TITANE	
METAL CABLES	HARDENED STEEL, TYPE 4 x 3 x 0,15 (EACH CABLE BEING MADE UP OF 4 STRANDS OF 3 WIRES), ANTI-CORROSION TREATMENT.	
MASS PER M ²	620 g ± 5%	EN ISO 2286-2
ROLL-WIDTH	180 cm ± 0,5 cm	
DENSITY OF PAIRS OF METAL CABLES IN WARP	25 pairs / lin. M.	
DENSITY OF PAIRS OF METAL CABLES IN WEFT	25 pairs / lin. M.	
TENSILE STRENGTH (WEFT/WARP)	220/220 daN/5 cm FOR SYNTHETIC WEAVE 200/200 daN/5 cm FOR METALLIC WEAVE	EN ISO 1421
BREAKING LOAD (WEFT/WARP)	20%/20%/5 cm FOR SYNTHETIC WEAVE 2%/2%/5 cm FOR METALLIC WEAVE	EN ISO 1421
FLAME RETARDANCY	NOT CLASSIFIED	
OPERATING TEMPERATURES	FROM -30°C TO +70°C	
GUARANTEE	24 MONTHS	
MAKING-UP TECHNIQUES	HOT AIR, ULTRASOUNDS OR HIGH FREQUENCY. WITH HIGH FREQUENCY WELDING, ELECTRICAL INSULATION REQUIREMENTS MUST BE RESPECTED. IT IS ESSENTIAL TO CONSULT THE DEFENDER® MAKING-UP MANUAL.	
MANAGEMENT QUALITY SYSTEM	ISO 9001	

The technical specifications mentioned are average values given as an indication and may be subject to modifications.

FERRARI

